

Growing Kings Logic Model



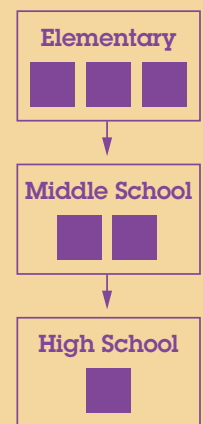
GROWING KINGS
BUILDING STRONGER MEN EVERYDAY



Growing Kings Logic Model Key



INPUTS



Curriculum

The 30-week school-based teaching guide that serves as the basis for each program at the elementary, middle school, and high school level.

Funding



Monetary resources provided by governmental agencies, foundations, local corporations, and community partners to finance a program at each school.



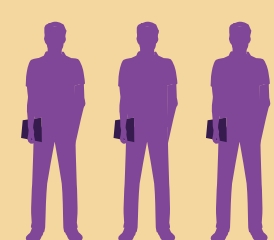
Staff

The program manager and volunteer coordinator responsible for implementation at each school.



Partners

Community institutions including the city government, colleges and universities, and others that help supply eligible mentors and in-kind donations to the program.



Volunteers

Community members that serve as mentors and parents that assist with programming.

ACTIVITIES

Mentorship

A staple of the program, successful men serve as guides, role models, and surrogate father-figures to students in the program by developing relationships and offering a consistent presence of support.

Math & Literacy

Students participate in activities, lessons, games, and other innovative learning tools to improve reading, math, and critical thinking skills.

Character Development

Mentors demonstrate through their own behavior while engaging students in interactive activities the traits of self-respect, discipline, intellect, responsibility, and perseverance.

Violence Prevention

Program sessions provide students with the enrichment and support needed to identify conflict resolution strategies, and techniques to develop greater self-efficacy.

Career Readiness

Students participate in sessions designed to teach and encourage entrepreneurship, while ensuring that young men graduating high school are prepared to excel in college, the military, and the workforce.

Student Referrals

Mentors and program managers refer students to services such as counseling and after-school tutoring based on need.

Community Service

Out-of-school activities that instill in the students a value for citizenship, leadership and contributing to their community.

OUTCOMES

Increase in Academic Performance

Students do better on homework, tests, and group projects.

Attitude Improvement

Students demonstrate more interest in their school work and deal with interpersonal conflicts better.

Decrease in Suspensions

Students are suspended less often for behavioral issues at school.

Greater Parent Involvement

Parents are more likely to visit the school, make contact with teachers and mentors, and participate in their child's education.

Vision of IMPACT



Graduates

Increasing the number of young men of color that earn high school diplomas and college degrees.



Employment

Improving the number of employed men of color in the community.



Healthy Decisions

Seeing students and men of color lead lives that are devoid of self-harm and destructive behavior.



Education Policy

Influencing how school systems engage and discipline male students.



Safe Community

Through building responsible men, creating a school and neighborhood where regular violence is no longer prevalent.